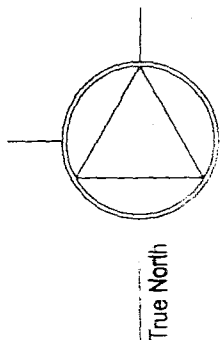
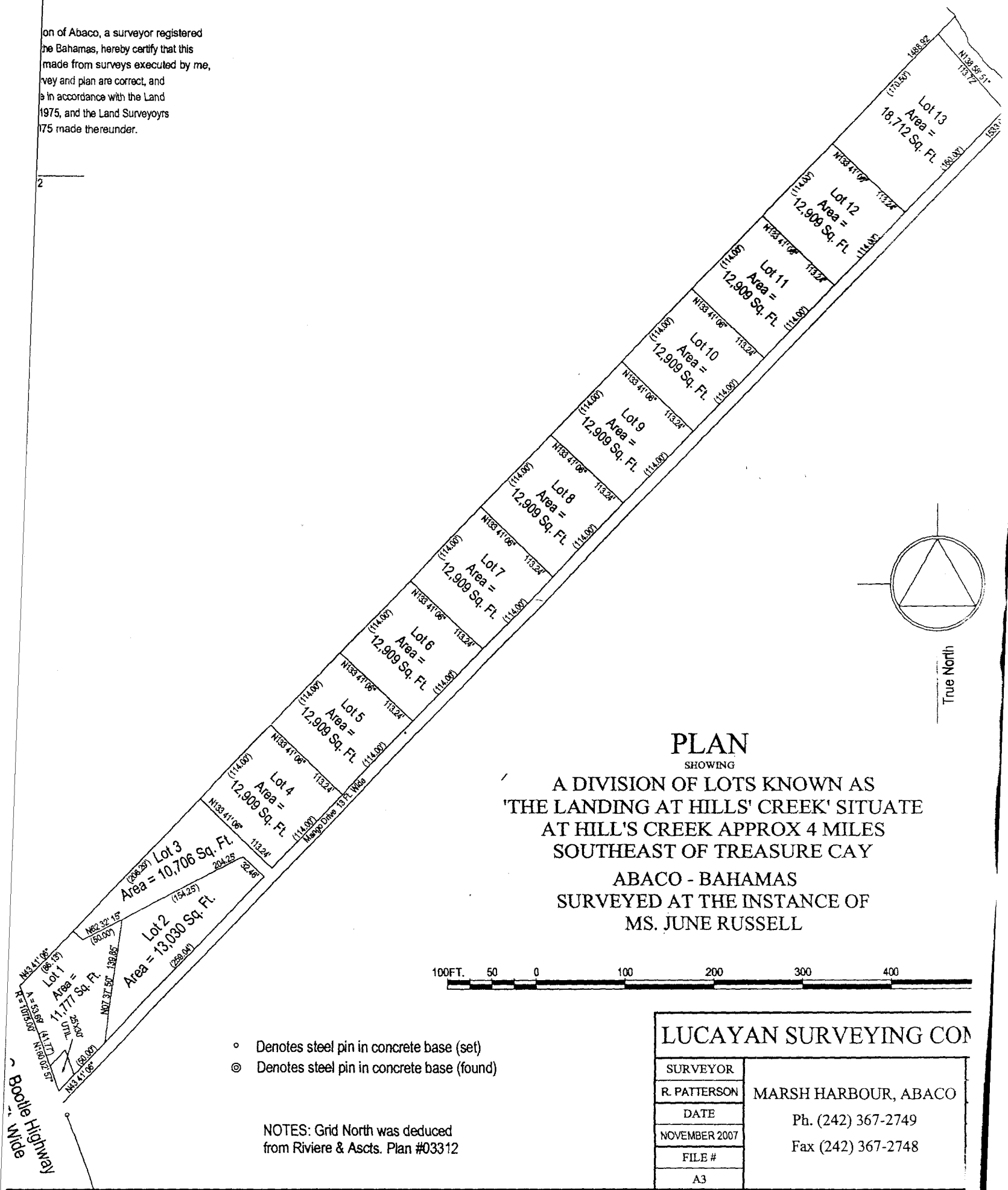


on of Abaco, a surveyor registered
 he Bahamas, hereby certify that this
 made from surveys executed by me,
 vey and plan are correct, and
 e in accordance with the Land
 1975, and the Land Surveyoys
 175 made thereunder.

2

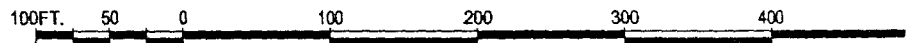


PLAN

SHOWING

A DIVISION OF LOTS KNOWN AS
 'THE LANDING AT HILLS' CREEK' SITUATE
 AT HILL'S CREEK APPROX 4 MILES
 SOUTHEAST OF TREASURE CAY

ABACO - BAHAMAS
 SURVEYED AT THE INSTANCE OF
 MS. JUNE RUSSELL



- Denotes steel pin in concrete base (set)
- ⊙ Denotes steel pin in concrete base (found)

NOTES: Grid North was deduced
 from Riviere & Ascts. Plan #03312

LUCAYAN SURVEYING COM

SURVEYOR	MARSH HARBOUR, ABACO Ph. (242) 367-2749 Fax (242) 367-2748
R. PATTERSON	
DATE	
NOVEMBER 2007	
FILE #	
A3	

Booile Highway
 Wide